

269

Cherries

The Official Newsletter of Billabong High International
School - Kelambakkam
CBSE Affiliation No.1932690

MARCH 13, 2025 - EDITION 269



CHERRIES - EDITION 269



THIS EDITION

Highlights of the Edition



CREATIVE ART



THE MAGIC OF SEPARATION



IMPRESSION AREA INVESTIGATION



**CELEBRATING WOMEN'S DAY AT BILLABONG
HIGH INTERNATIONAL SCHOOL**



ART CORNER

EDITORIAL BOARD



Ms. Shahana Asrar
Content Editor
Graphics & Layout Designer



#1

CREATIVE ART

Ms. Sarala B, Nursery Educator

Art plays a vital role in early childhood education, fostering creativity, fine motor skills, and self-expression. When children engage in art activities, such as fingerprint painting, they develop hand-eye coordination, strengthen their grip, and enhance their ability to focus.

They independently created artwork by turning their fingerprints into honeybees. This hands-on experience allowed them to explore textures, colors, and shapes while also boosting their confidence and imagination.

Beyond creativity, art activities help young learners develop cognitive and problem-solving skills. They learn to plan, make decisions, and appreciate the beauty of their own creations. Encouraging artistic expression at a young age lays the foundation for lifelong learning and innovation.

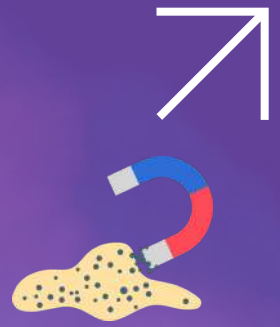




#2

THE MAGIC OF SEPARATION

M Kaleeswari K, Grade 1 Science Educator



Have you ever removed stones from rice or sifted flour before baking? These everyday tasks involve simple separation techniques!

In our classroom experiment, we explored three methods: handpicking, sieving, and magnetic separation. Handpicking helped us remove large, visible objects, while sieving separated particles by size. Using a magnet, we easily extracted iron filings from sand.

These techniques aren't just for experiments—they're used in food processing, construction, and recycling industries. Science is all around us, making life easier in ways we often don't even notice!



#3

IMPRESSION AREA INVESTIGATION

Ms. Abinaya , Grade 3 Math Educator



An activity conducted to understand the area of irregular shapes using hand impressions involves using a learner's hand as a model to explore and measure the area of irregular forms. In this hands-on exercise, learners place their hands on paper and outline the shape, effectively creating an irregular polygon. By analyzing the hand's outline and comparing it to grid paper, they estimate the area.

This activity helps build a concrete understanding of how to break down complex shapes into manageable parts and apply mathematical concepts, such as counting square units, to determine their areas. It engages learners creatively, making the concept of measuring irregular areas more intuitive and accessible.





CELEBRATING WOMEN'S DAY AT BILLABONG HIGH INTERNATIONAL SCHOOL



Ms. Kalpana Kumari , Activities Coordinator



This year, Billabong High International School (BHIS) proudly celebrated International Women's Day with the captivating theme "Grace, Glamour & Gourmet: Celebrating Women's Day with Talent and Style." The day was filled with remarkable displays of talent from our incredible teachers through a cooking showcase, fashion parade, and dynamic dance performance.

The celebration began with a culinary showcase, where teachers prepared an array of mouth-watering dishes inspired by various Indian states. This impressive display was judged by **Ms. Nirmala**, a parent of students from Grades 7 and 5, who commended the creativity and flavors presented.

The highlight of the event was the fashion parade, where teachers showcased their elegance and style. Dressed in stunning attire, they captivated the audience with their poise and confidence. The fashion parade was exclusively judged by **Dr. Rehab**, who appreciated the thoughtfulness and creativity behind each outfit.

The festivities concluded with a spirited group dance performance by the teachers, delivering a powerful message of empowerment and unity. The dance performances were judged by **Ms. Anamika**, who admired the energy and coordination of the performers.

The Principal's address emphasized the importance of celebrating women's contributions. As the event wrapped up, everyone enjoyed delicious snacks, leaving with smiles, inspiration, and a renewed appreciation for women's achievements.





















ART CORNER

Ms Karishma, Art Educator



THE BEAUTY OF A STAINED GLASS SUNRISE

Grade 7

Art is a wonderful way to express feelings and creativity. The painting shown here beautifully represents a sunrise over green hills, designed to resemble stained glass. It uses bold black outlines and bright colors to create a striking effect.

Colors and Meaning

The artwork is divided into sections, each filled with different shades of color. The sun is a warm yellow, symbolizing hope and new beginnings. The sky features shades of red, orange, and blue, showcasing the beauty of the sunrise. The green hills below evoke a fresh and peaceful feeling, representing nature.

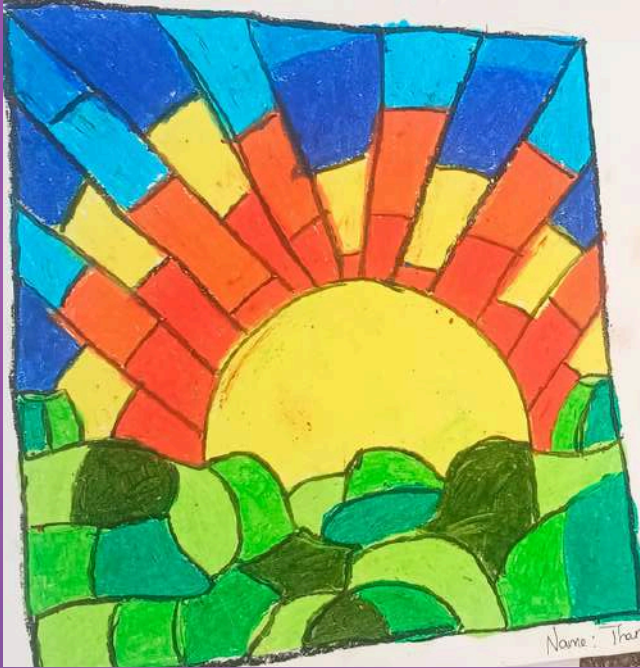
Techniques Used

This painting follows a unique style that mimics stained glass. The artist has used thick black lines to separate the colors, much like the metal frames in real stained glass windows. The colors are carefully chosen to blend smoothly and create a balanced composition.

Why This Art is Special

This painting is special because it captures the beauty of nature in a creative way. The sunrise reminds us of a fresh start each day. The stained glass effect gives it an artistic and unique look. This style of art can be used to decorate homes, schools, or even inspire real stained glass designs.

Art is a powerful way to express emotions and ideas. This stained glass-style painting of a sunrise teaches us about colors, patterns, and creativity. It's a great example of how simple shapes and bright colors can come together to create something beautiful and meaningful.





EXPLORING THE UNDERWATER TUNNEL: A CREATIVE ARTWORK

Grade 5 & 6

This beautiful drawing takes us on a journey into an underwater tunnel filled with sea creatures. The perspective of the artwork creates the illusion of walking through a long aquarium tunnel, making it feel as if we are surrounded by marine life.

Elements of the Artwork

The painting features a checkered yellow-and-white pathway that leads into the tunnel, adding depth and perspective. The walls and ceiling of the tunnel are transparent, giving us a clear view of the ocean creatures swimming around. The bright blue water sets a calming background for the colorful marine animals.

Sea Creatures in the Scene

The artist has carefully included various sea creatures to bring the scene to life. A friendly pink octopus waves at the viewer, while turtles, jellyfish, stingrays, and different types of fish swim around. The addition of coral, seaweed, and rocks on the sides adds to the underwater effect.

Perspective and Creativity

One of the most impressive aspects of this artwork is the use of perspective. The pathway narrows as it moves towards the center, creating depth and making the scene look realistic. The curved lines of the tunnel give the feeling of being inside a real aquarium. The colors are bright and well-chosen, making the scene lively and engaging.

Why This Artwork is Special

This artwork captures the beauty and wonder of marine life. It makes us feel as if we are inside an underwater world, surrounded by fascinating creatures. It also highlights the importance of the ocean and its amazing biodiversity.

Through this artwork, we can appreciate the artist's creativity and imagination. The underwater tunnel not only looks visually stunning but also inspires curiosity about marine life. This type of art encourages people to explore and protect the beauty of our oceans.





EXPLORING THE UNDERWATER TUNNEL: A CREATIVE ARTWORK

Grade 1 & 2

The Art of Lines, Shapes, and Colors: Showcasing Innocence in Early Learning

Art is built on three fundamental elements: lines, shapes, and colors. These elements come together to create structure, movement, and emotion in visual compositions. For young learners in grades 1 and 2, exploring these elements can be a powerful way to express their creativity and innocence.

Lines: Direction and Expression

At the early learning stage, children are just beginning to understand how lines guide their artwork. Simple, bold lines help them define shapes and express emotions. They might draw straight lines to represent calm or use curved lines for playful, soft expressions. Teaching kids how different lines can convey feelings helps them connect their art with emotions.

Shapes: Structure and Form

Shapes are one of the first things young children start experimenting with in their artwork. In grades 1 and 2, children focus on geometric shapes like squares and circles, and start to explore more organic, freeform shapes, often inspired by nature. Their artwork often features shapes that are uncomplicated and expressive, symbolizing their clear view of the world.

Geometric – Squares, circles, triangles – neat, structured, and easy to understand.

Organic – Freeform shapes that are dynamic and often inspired by their environment.

These shapes allow children to start creating balance and depth in their art, sometimes reflecting their innate sense of harmony and simplicity.

Colors: Emotion and Impact

Young learners use colors to showcase their emotions and perceptions of the world around them. At this stage, children tend to be instinctive with their color choices, using bright, primary colors to express joy and energy. Color theory may not be fully taught yet, but the emotional impact of color is felt intuitively.

For young learners, the art of lines, shapes, and colors is more than just a learning tool; it's a way to communicate their innocent, unfiltered view of the world. These basic elements help children explore structure, emotion, and imagination, allowing them to express their creativity in ways that are uniquely theirs. Through their simple but impactful artwork, children reveal their innocence and natural curiosity.

